



# Belfast Waterfront

05

**Sector**  
Hospitality  
& Leisure

 **Brett  
Martin**

**Products**

**Marlon  
Clickfix VF**

# Belfast Waterfront

## Location

Belfast

## Product

Clickfix VF

## Main Contractor

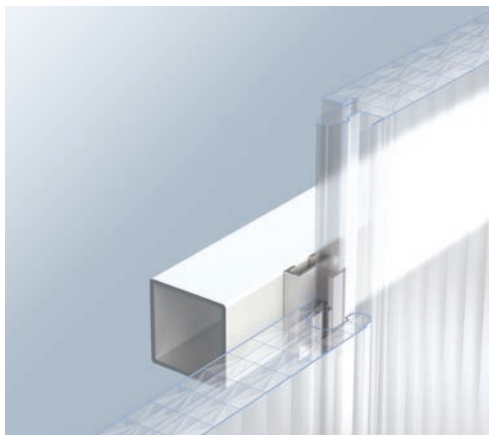
McLaughlin and Harvey  
& McAdams Design

## Architect

TODD Architects

## Quantity

Over 1,750m<sup>2</sup>



## Clickfix creates a dynamic façade at iconic Belfast exhibition & conference centre

Marlon Clickfix played a key role in the £29.5 million transformation of one of Belfast's most important civic buildings, the Belfast Waterfront, into a world class international conference facility.

The highlight of the bold 700m<sup>2</sup> extension which has doubled the size of the existing facility, is a semi-transparent and colourful façade created using Marlon Clickfix polycarbonate panels.

The building's 150m long riverfront façade was wrapped with over 1750m<sup>2</sup> of multiwall polycarbonate in a range of 3 tints (petrol, viola and glass green) which was extruded in 2 different intensities creating a graduated flow of colour along the elevation.

Marlon Clickfix panel glazing provides high levels of light transmission, superior thermal insulation and UV protection as well as the impact resistance resilience and structural strength inherent in all of Brett Martin's high performance polycarbonate sheet products.



# Belfast Waterfront

“

The use of Marlon Clickfix enabled us to create a stunning variation in colour and transparency, so that the façade changes during the day, depending on how the light hits the building.

Combined with the fact that Marlon Clickfix offered a full height 14m panel and is manufactured locally, this made it an ideal choice for the prominent riverfront façade.

Peter Minnis, Director,  
TODD Architects





# Belfast Waterfront

## Technical Specification

Marlon Clickfix VF

**U value**  
Sheet - 0.99W/m²K  
Total wall - 0.10w/m²k

**Light Transmission**  
30%

**Non Standard Enhancement**  
Sheets made with double glass to help screen construction build-up

**Fire Classification**  
B-s1, d0 to EN13501-1

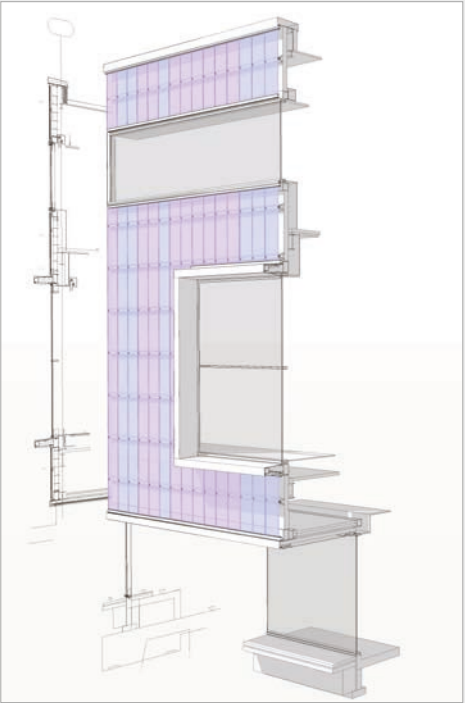
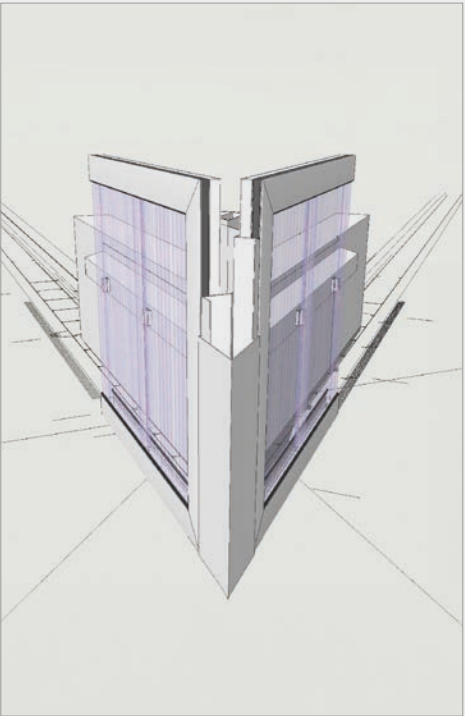
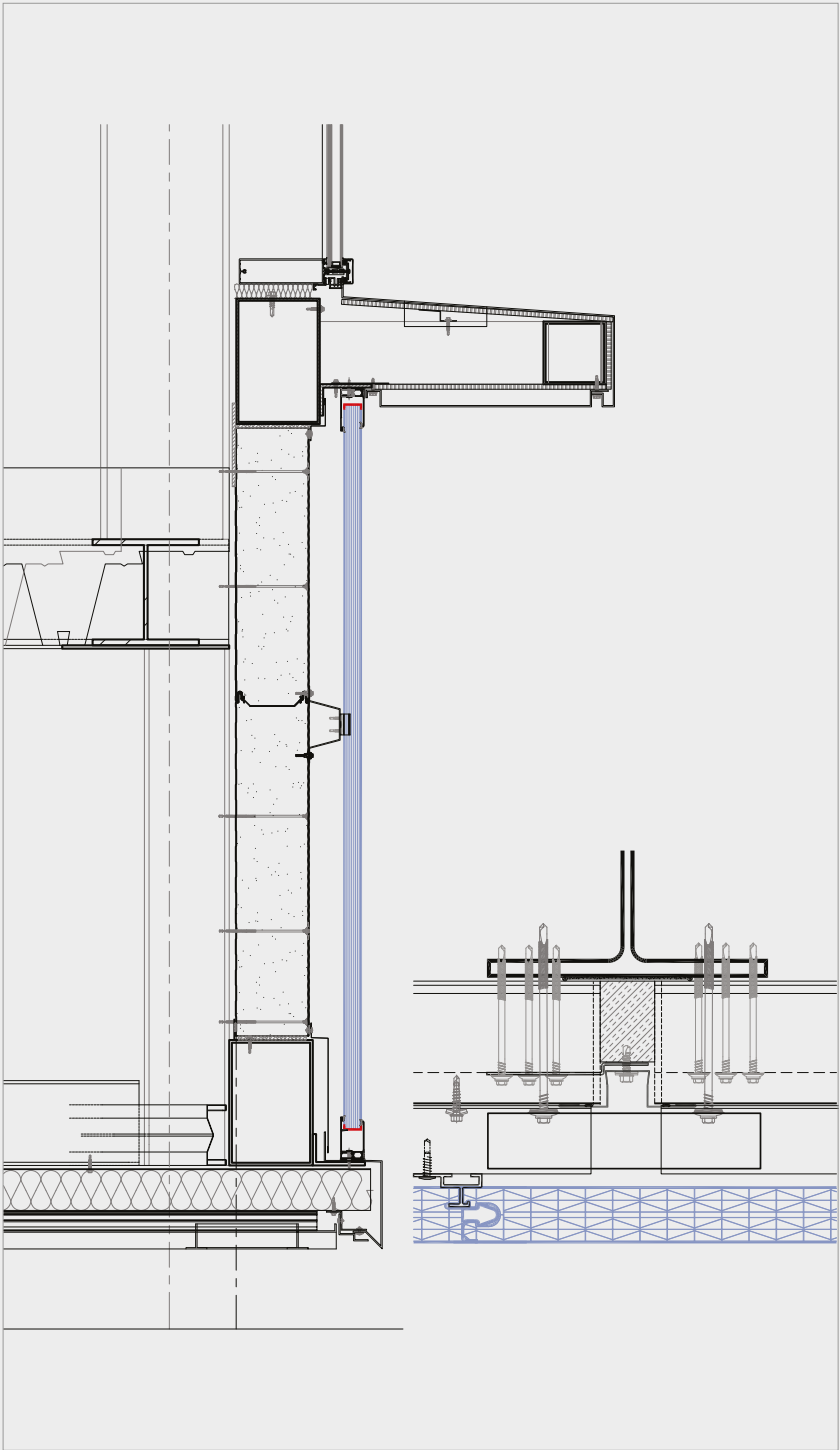
**Spanning**  
Purlin ctrs 1.325m,  
max load 2.2kN/m²

**Air Permeability**  
0.18m³/h.m² +/-50 Pa

**Sound Reduction**  
Rw 22dB



### Product Application



## **Brett Martin Ltd.**

3419/0424

24 Roughfort Road  
Newtownabbey, Co. Antrim  
Northern Ireland, BT36 4RB

t: +44 (0) 28 9084 9999  
e: commercial@brettmartin.com

## **Brett Martin Daylight Systems Ltd.**

Sandford Close  
Aldermans Green Industrial Estate  
Coventry, West Midlands  
England, CV2 2QU

t: +44 (0) 24 7660 2022  
e: daylight@brettmartin.com

## **Brett Martin DWC LLC**

Dubai World Central  
Business Centre, PO Box 390667  
Dubai, UAE

t: +971 (0) 52 866 5494  
e: waqaskhawaja@brettmartin.com

---

For the latest information visit  
**brettmartin.com**



Scan QR code  
to view video



Scan QR code to  
view case study

