



Polar Technology

02

Sector
Retail &
Commercial

 **Brett
Martin**

Products
**Marlon
Clickfix VF**

Polar Technology

Location

Eynsham

Product

Clickfix VF

Main Contractor

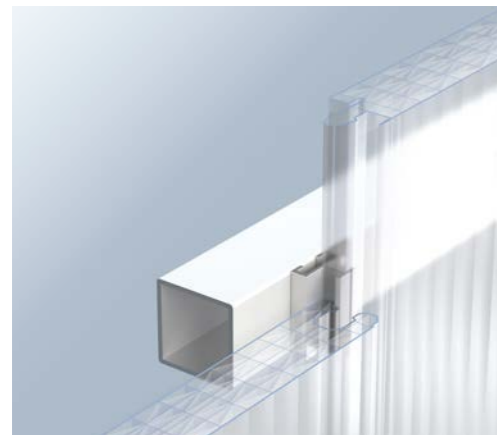
EG Carter & Co. Ltd.

Architect

Studio Spicer

Quantity

900m²



Clickfix instrumental in creating striking facade for advanced engineering campus

The Polar Technology campus building forms part of the Horizon Technology Park, an advanced engineering complex being developed in Oxfordshire to house the expansion of The Polar Technology Management Group Ltd.

Polar Technology is at the forefront of engineering advancement building a strong portfolio in the aerospace, defence, medical and motor sport sectors.

The company has been supporting its clients in its drive to achieve net zero carbon status within the next 10 to 20 years as well as taking steps to decrease its own impact on the environment.

The company's new state-of-the-art, 100,000-square-foot facility, which was designed by Studio Spicer Architects, boasts a number of green features designed to eliminate the vast majority of Polar's carbon footprint.

Marlon Clickfix VF was selected due to its ease of install and versatility in terms of accommodating the striking design reflecting the bold vision of the business. The pearlescent polycarbonate panels against the solid black external cladding creates a contemporary feel with diffused daylight during the day transforming into a stunning back lit facade at night.

Polar Technology

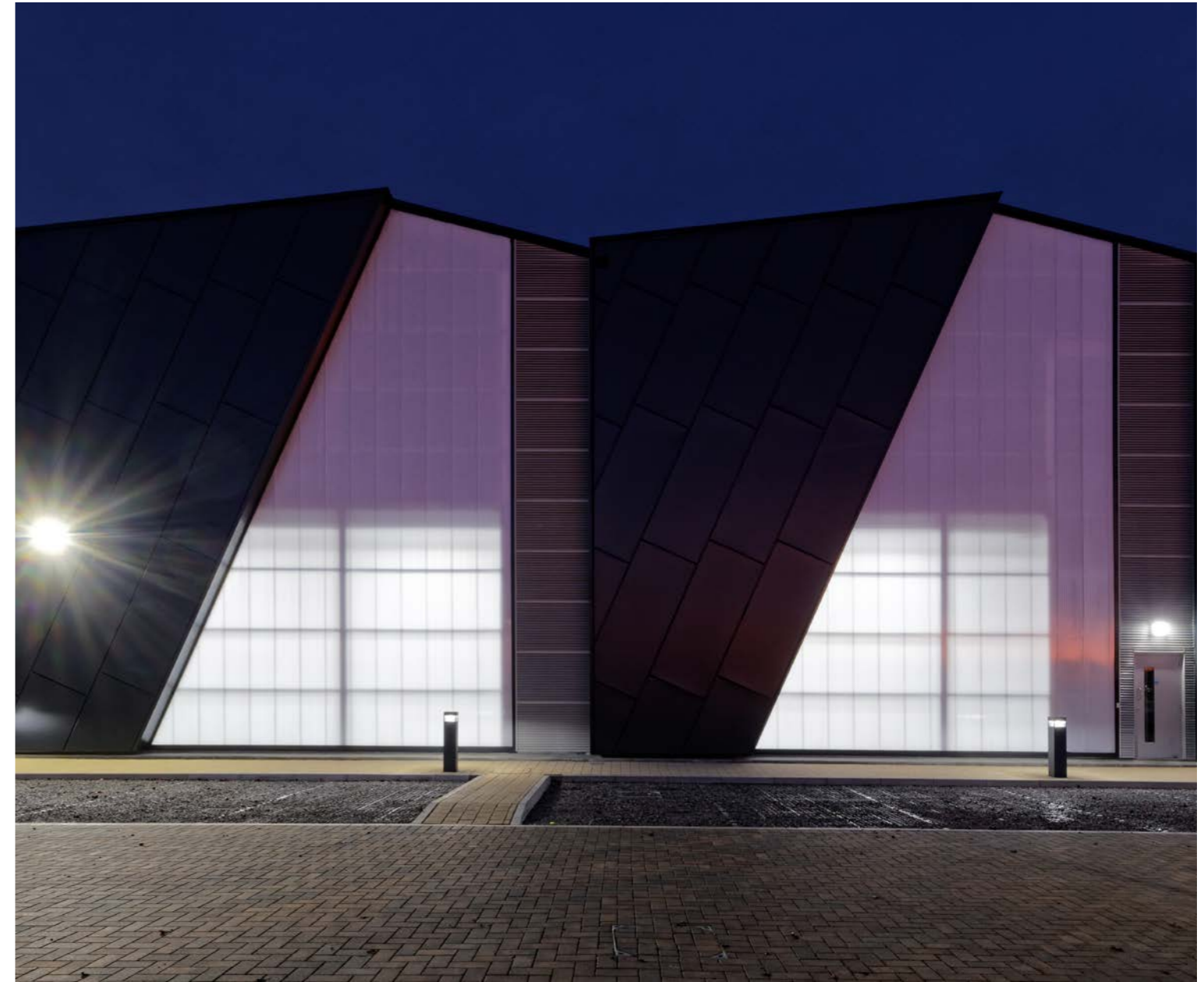
“

Polar Technology, a company specializing in advanced manufacturing, faced a challenge in integrating natural daylight into their buildings with unconventional shapes. This is where Clickfix, a product designed for efficient and flexible glazing solutions, played a pivotal role.



Brett Martin Clickfix provided Polar Technology with a versatile, efficient, and aesthetically pleasing way to incorporate natural daylight into their buildings, regardless of their shape. The system's flexibility, ease of installation, and durability made it an ideal choice for enhancing the working environment while also contributing to energy efficiency.

Paul Priestly, Regional Sales Manager,
Industrial Rooflights, Brett Martin



Photography: Studio Spicer



Polar Technology

Technical Specification

Marlon Clickfix VF

U value

Sheet - 0.99 W/m²K

Light Transmission

44%

Non Standard Enhancement

11m panels rake cut at 20 degrees to create building form

Fire Classification

B-s1, d0 to EN13501-1

Spanning

Purlin ctrs 1.5m

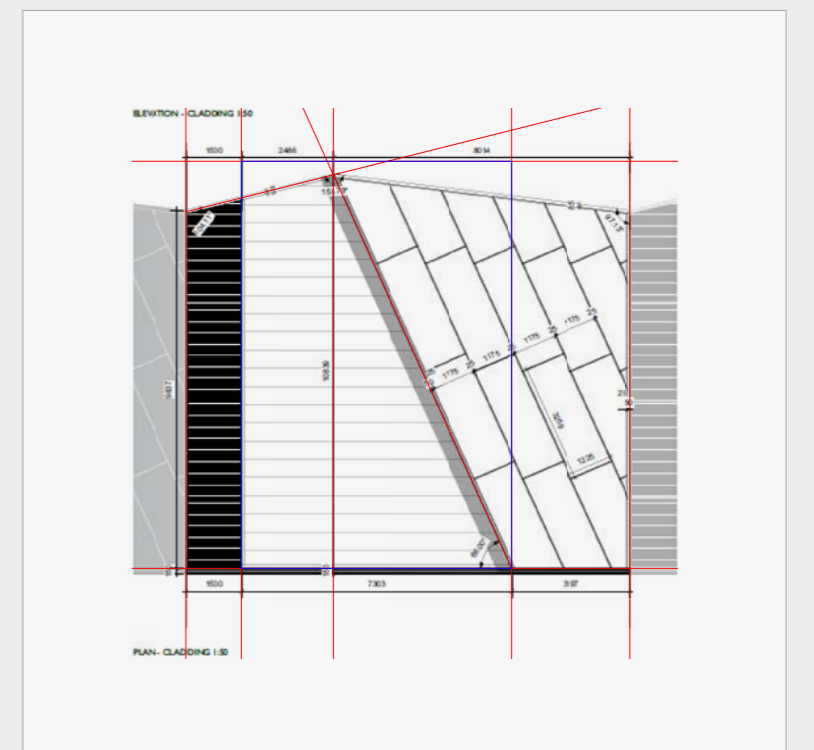
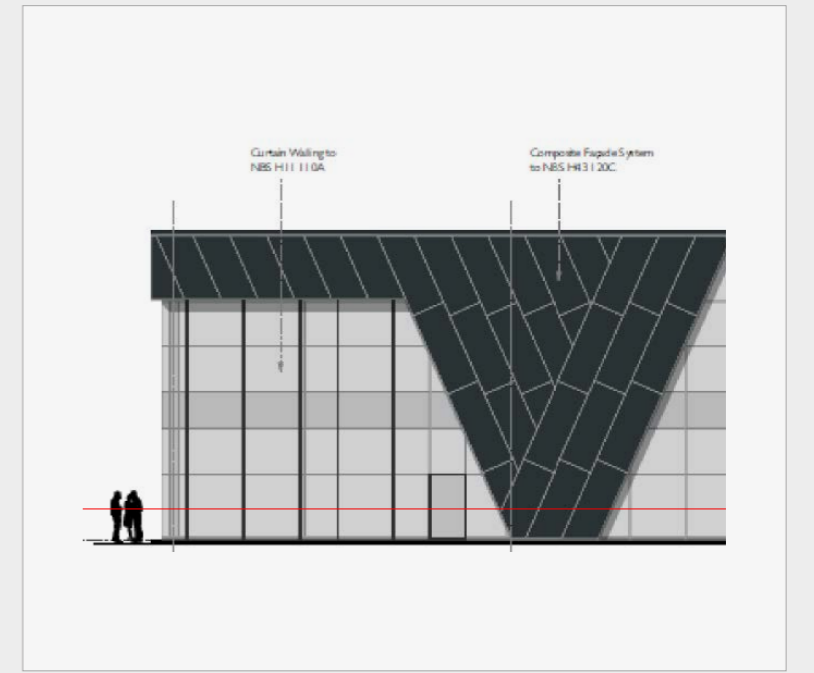
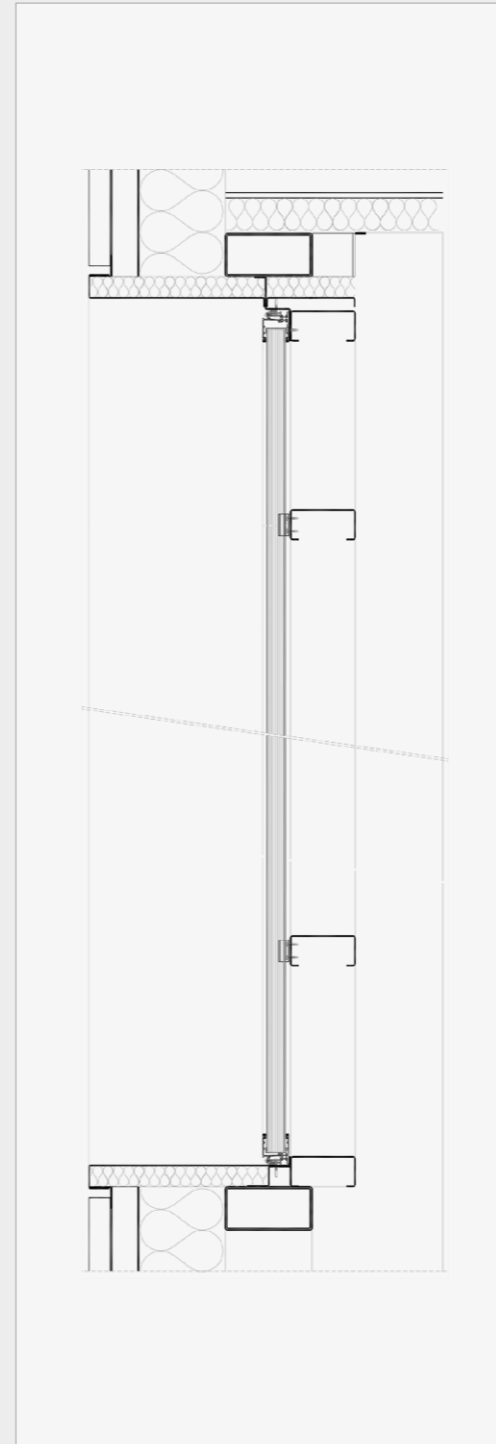
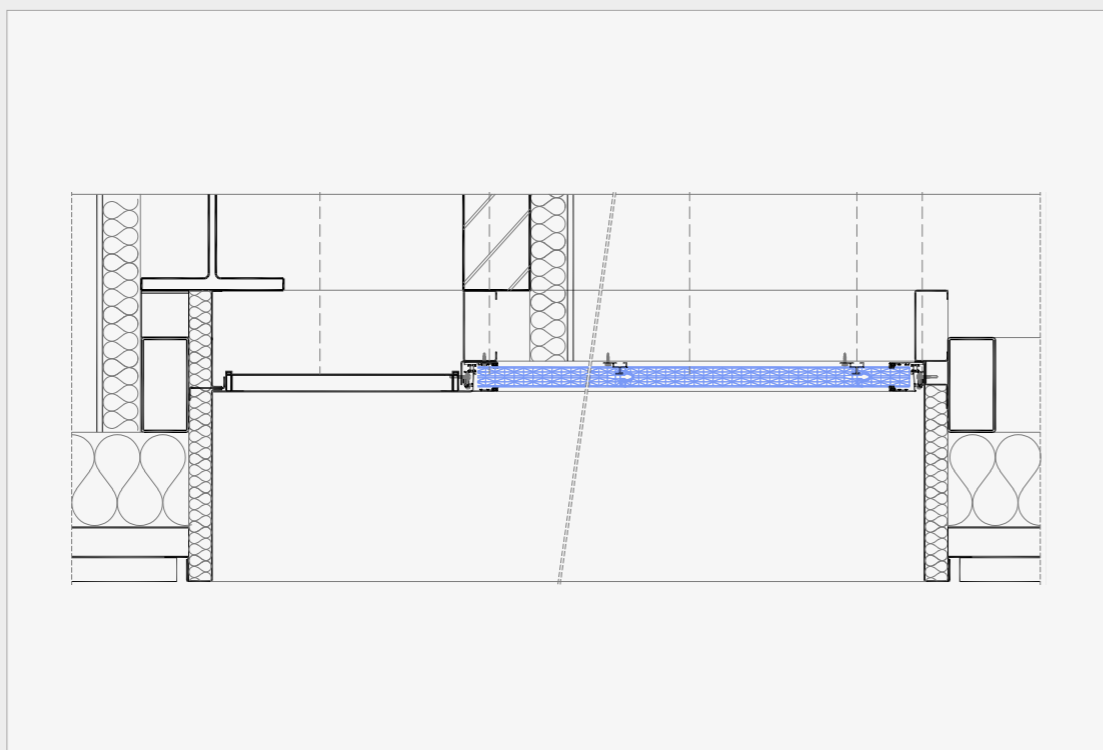
Air Permeability

0.18m³/h.m² +/-50 Pa

Sound Reduction

Rw 22dB

Product Application



Brett Martin Ltd.

3419/0824

24 Roughfort Road
Newtownabbey, Co. Antrim
Northern Ireland, BT36 4RB

t: +44 (0) 28 9084 9999
e: commercial@brettmartin.com

**Brett Martin
Daylight Systems Ltd.**

Sandford Close
Aldermans Green Industrial Estate
Coventry, West Midlands
England, CV2 2QU

t: +44 (0) 24 7660 2022
e: daylight@brettmartin.com

Brett Martin DWC LLC

Dubai World Central
Business Centre, PO Box 390667
Dubai, UAE

t: +971 (0) 52 866 5494
e: waqaskhawaja@brettmartin.com

For the latest information visit
brettmartin.com

