



Quad One Harwell Campus

03

Sector
Education &
Healthcare



Products

**Marlon
Clickfix VF**

Quad One Harwell Campus

Location

Didcot

Product

Marlon Clickfix

Main Contractor

SDC Builders

Cladding Contractor

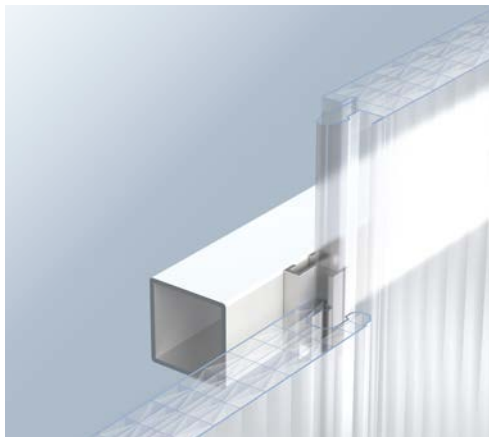
MTW Architectural

Architect

Hawkin Brown associates

Quantity

280m²



Clickfix diffuses daylight at science and innovation hotspot

Brett Martin supplied the Marlon Clickfix panel glazing system to a 6,000 square foot Gym and Cafe Area in a prominent location at the heart of the UK's leading science and innovation campus, Harwell.

The system is comprised of the Marlon Clickfix VF Glazing bar frame and Marlon Clickfix opal polycarbonate panels which measure 90 mtrs x 4.2 mtrs high.

The system was selected by the contractor as it had previously been used very successfully on some prominent projects. They were impressed with the thermal performance and Brett Martin were able to meet the challenges of supplying to a tight schedule.

The end result is an open and welcoming space which greatly complements the range of existing amenities.

Quad One Harwell Campus



Quad One Harwell Campus

Technical Specification

**Marlon
Clickfix VF**

U Value

Sheet - 0.99 W/m²K
(centre pane)

Light Transmission

Glass clear 52%

Non Standard Enhancement

Site assembled curved corners

Fire Classification

B-s1, d0 to EN13501-1

Spanning

Purlin ctrs 1.44m,
Project max load 2 kN/m²

Air Permeability

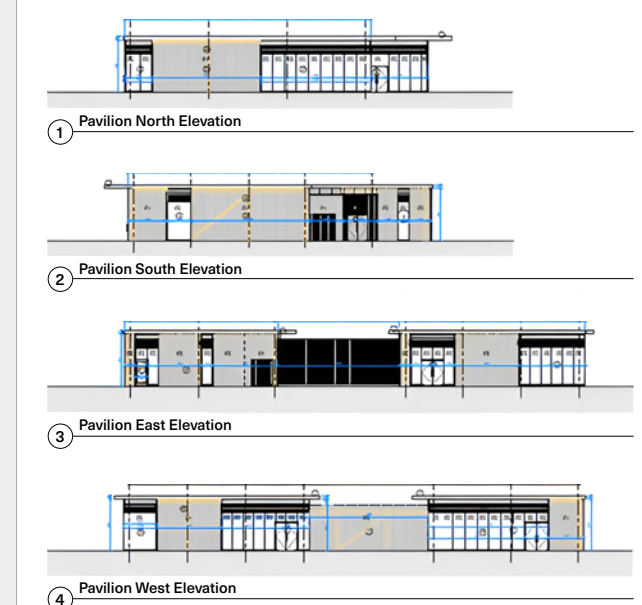
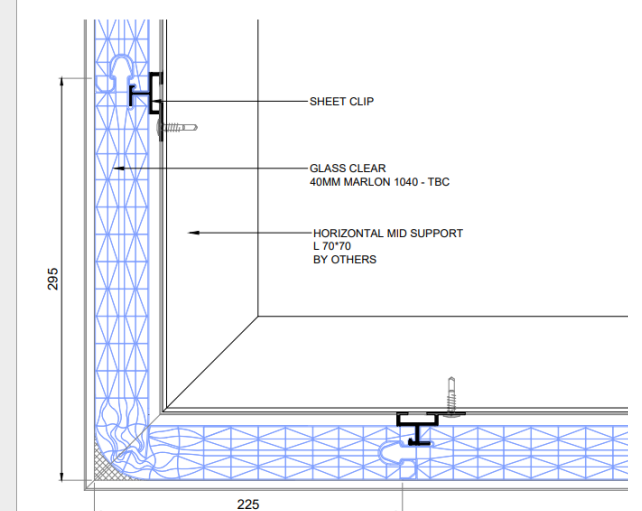
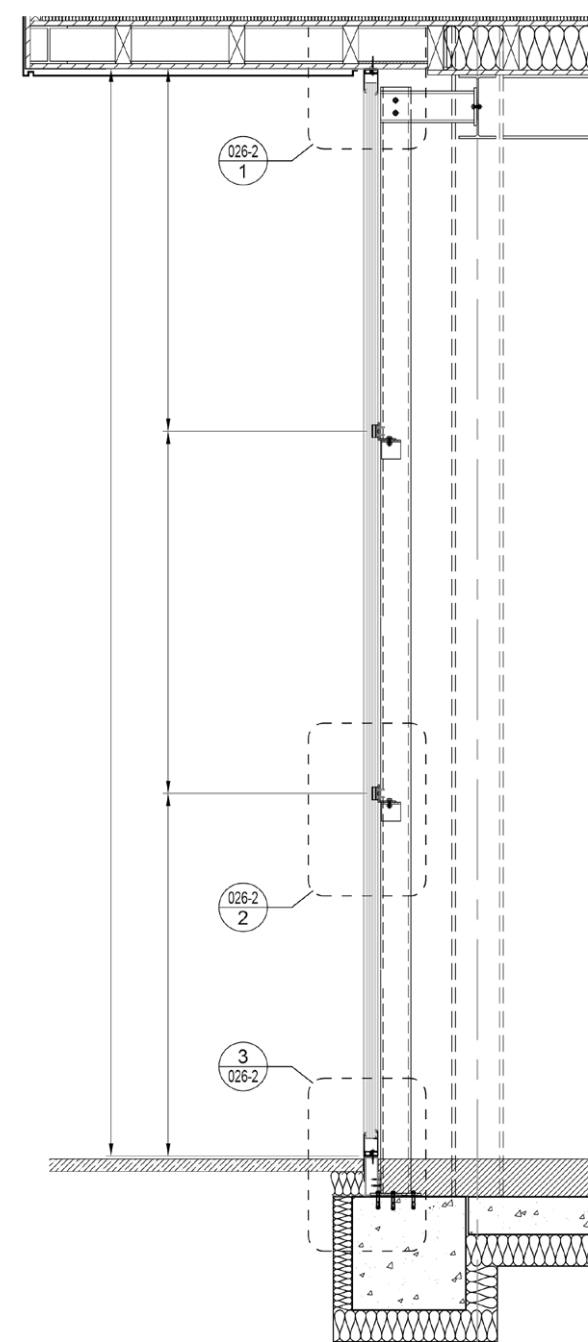
EN12114:0.18m³/h/
m²@50+Pa,0.21m³/h/
m²@-50Pa
EN12153:A3(450Pa)
ASTM E 283-04(2012) Static
Air Leakage, Infiltration
(qA0.79m³/h/m²@300Pa)

Sound Reduction

(Sound attenuation)
EN ISO 10140-2:2010
Rw(C;Ctr)=22(-1;-1)dB
(single skin)



Product Application



Brett Martin Ltd.

3419/0924

24 Roughfort Road
Newtownabbey, Co. Antrim
Northern Ireland, BT36 4RB

t: +44 (0) 28 9084 9999
e: commercial@brettmartin.com

Brett Martin Daylight Systems Ltd.

Sandford Close
Aldermans Green Industrial Estate
Coventry, West Midlands
England, CV2 2QU

t: +44 (0) 24 7660 2022
e: daylight@brettmartin.com

Brett Martin DWC LLC

Dubai World Central
Business Centre, PO Box 390667
Dubai, UAE

t: +971 (0) 52 866 5494
e: waqaskhawaja@brettmartin.com

For the latest information visit
brettmartin.com



Scan QR code to
view case study