

Flat Glass

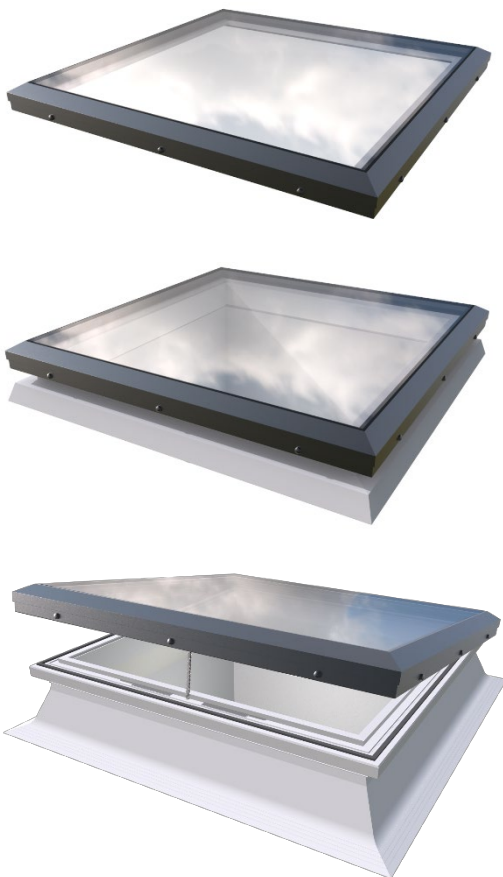
NBS156

Brett Martin Flat Glass
NBS Specification

Consult Brett Martin Daylight Systems early in the design process as we can provide in-depth assistance with design and specification.

Brett Martin Flat Glass is a premium flat glass rooflight intended for installation on flat roofs of all modern building types to provide natural light (and ventilation where specified).

The double-glazed glass panel is encased in a powder coated aluminium frame, providing a sleek product from every angle. Classified non-fragile to CWCT TN67 for class 1 roofs** (for sizes up to 1200x1200 or 2000x1000) and CWCT TN-67 for class 2 roofs** (for all sizes above 1200x1200 or 2000x1000) and Class B to ACR[M]001 for all sizes, it provides a safe rooflight choice. The product achieves a vertical U_r -Value of 1.46 – 1.83 W/m²K, exceeding the minimum levels currently set out in English building regulations.



- Flush glass premium rooflight.
- Tested to be non-fragile to CWCT TN-67 (for class 1 roofs)* and Class B non-fragile to ACR[M]001.**
- Available as fixed units or supplied with manual or mains powered opening.
- All Fixed rooflights are Secured by Design accredited as standard
- Components of powered opening rooflights (230V) are completely concealed for an unobstructed light well.
- Extensive options to satisfy requirements for ventilation.
- For ease of installation when supplied with PVC kerb, the tapered kerb foot does not require timber fillets and an integral clamp holds the roofing membrane or felt in place.

**Sizes over 1200x1200 or 2000x1000 tested to CWCT TN67 for Class 2 roofs*

***When new and fully installed to Brett Martin Daylight Systems installation guides*



Consult Brett Martin Daylight Systems technical literature for further details.

Full NBS Specification clause on Page 2 and 3



brettmartin.com

Flat Glass

NBS156

Brett Martin Flat Glass
NBS Specification

Manufacturer:	Brett Martin Daylight Systems Ltd., Sandford Close, Aldermans Green Industrial Estate, Coventry, CV2 2QU. Tel: 024 7660 2022 Fax: 024 7660 2745. Email: daylight@brettmartin.com Web: www.brettmartin.com
Product ref:	Brett Martin Flat Glass rooflight
Type:	Sleek, contemporary aesthetics inside and out: Double-Glazed flat glass (6mm toughened outer –90% Argon filled cavity – laminated inner including PVB interlayer). NB – the inner pane thickness varies with size. All units include a soft coat Low E coating Ventilation options: None / Trickle Vent (8400mm ² per rooflight) / Automatic Humidity Trickle Vent (7822mm ² per rooflight) Opening options: Fixed (Secured by Design) / Manual Linear Drive (MLD) / Powered Chain Drive (PCD)
Size:	Rooflight size in mm equals roof opening size when supplied with kerb or overall external dimension of builders upstand if not supplied with BMDS kerb (some sizes not available with kerbs or opening units. Consult Brett Martin Daylight Systems for details): 600x600 / 600x750 / 600x900 / 600x1050 / 600x1200 / 600x1350 / 600x1500 / 600x1650 / 600x1800 / 750x750 / 750x900 / 750x1050 / 750x1200 / 750x1350 / 750x1500 / 750x1650 / 750x1800 / 750x1950 / 900x900 / 900x1050 / 900x1200 / 900x1350 / 900x1500 / 900x1650 / 900x1800 / 900x1950 / 900x2100 / 1000x1000 / 1050x1050 / 1050x1200 / 1050x1350 / 1050x1500 / 1050x1650 / 1050x1800 / 1050x1950 / 1050x2100 / 1050x2250 / 1050x2400 / 1050x2550 / 1050x2700 / 1050x2850 / 1050x3000 / 1050x3150 / 1200x1200 / 1200x1350 / 1200x1500 / 1200x1650 / 1200x1800 / 1200x1950 / 1200x2100 / 1200x2250 / 1200x2400 / 1200x2550 / 1200x2700 / 1200x2850 / 1200x3000 / 1200x3150 / 1200x3300 / 1200x3450 / 1350x1350 / 1350x1500 / 1350x1650 / 1350x1800 / 1350x1950 / 1350x2100 / 1350x2250 / 1350x2400 / 1350x2550 / 1350x2700 / 1350x2850 / 1350x3000 / 1350x3150 / 1350x3300 / 1350x3450 / 1500x1500 / 1500x1650 / 1500x1800 / 1500x1950 / 1500x2100 / 1500x2250 / 1500x2400 / 1500x2550 / 1500x2700 / 1500x2850 / 1500x3000 / 1500x3150 / 1500x3300 / 1500x3450 / 1500x3600 / 1650x1650 / 1650x1800 / 1650x1950 / 1650x2100 / 1650x2250 / 1650x2400 / 1650x2550 / 1650x2700 / 1650x2850 / 1650x3000 / 1650x3150 / 1650x3300 / 1650x3450 / 1650x3600 / 1800x1800 / 1800x1950 / 1950x1950. Non-standard sizes also available (...mm x...mm roof opening).
Frame:	Aluminium Powder Coated RAL 7016 grey / RAL 9005 black Thermally isolated rooflight assembly minimises the risk of condensation.
Kerb:	Rigid Multiwall PVC kerb, designed to fit directly to roof structural element (by others), incorporating integrated roof covering clamp for ease of installation: Direct Fix (DF) kerb (PVC kerb applied to existing builders upstand for ventilated or opening options) / Standard kerb (maximum roof covering termination height of 150mm) / Tall kerb (maximum roof covering termination height of 300mm) / Rooflight only option for fitting direct to existing Builders Upstand.

Flat Glass

NBS156

Brett Martin Flat Glass
NBS Specification

- Glazing Details:** Double-Glazed flat glass (6mm toughened outer –(90%) Argon filled spacer – 6.8mm / 7.5mm / 9.5mm / 11.5mm laminated inner (depending on size)
Light transmission: 77% - 79% / Light Reflection: 12%
Glass is designated Class A to EN13501 part 1, as it is included in the list of CWFT (classified without further test) materials published in the Official Journal of the EU (see European Commission Decision 96/603/EC).
These rooflights are glazed with a 6mm toughened outer pane and can therefore be regarded as having a B_{ROOF(t4)} classification as per English building regulations.
- Other Requirements:** 10 year commercial products warranty available.
Acoustic Pack available for increased noise insulation.
Security Grille available for increased security.
BBA Approval (certificate number 06/4385)
- Fixing:** In accordance with Brett Martin Daylight Systems' fixing recommendations.
Fixings included to attach kerb to timber deck, or frame to builder's upstand, depending on option selected.

