



Marlon R Glaze

Roof Glazing Panel Installation Guide



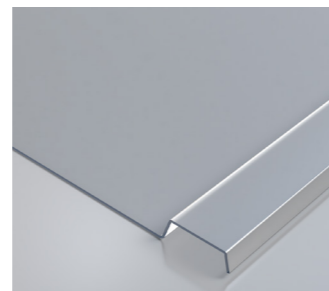
Use Marlon R Glaze for pergolas, canopies and carports.

To view the installation video scan the QR Code:

brettmartin.com/marlonglaze



To install Marlon R Glaze you will need:



Marlon R Glaze Polycarbonate Panel



White EPDM Foamed Tape



Marlon R Glaze Fixings



Flashing

01

Start with a structure that is sound and square. Roof should be sloped to a minimum of 5° for adequate water run off.

Rafters must be at 600mm centres. See reverse of leaflet for further details on Canopy Structure.



02

Add foam tape to the top of all rafters. This will provide a friction barrier and eliminate any noise created by thermal movement of the polycarbonate panel.



03

Sheets are available in standard lengths however, trimming if required is possible. See reverse for further details on cutting. Please note single sheet to be continuous over roof slope. See reverse of leaflet for further details on sheet length.



04

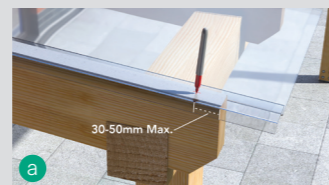
Position the first sheet on the roof ensuring the sheet slides under any pre-installed flashing. Leave a gap of at least 25mm between the top end of the panel and the wall to allow for thermal expansion. Ensure an overhang of between 50-150mm at the bottom end of the panel.



05

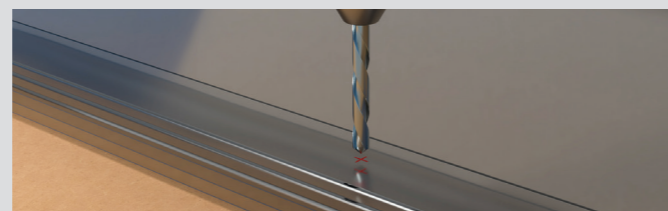
Measure and mark fixing holes with a marker as follows:

- Fixings at both edges of the sheet (top and bottom) should be 30-50mm from the end of the rafter.
- Remaining fixings should be marked every 500mm (up to 2.0kN/m²)



06

Pre-drill 12mm diameter holes (see reverse of leaflet for more detail on drilling). Panels can be stacked for drilling up to a maximum of 3 panels.



07

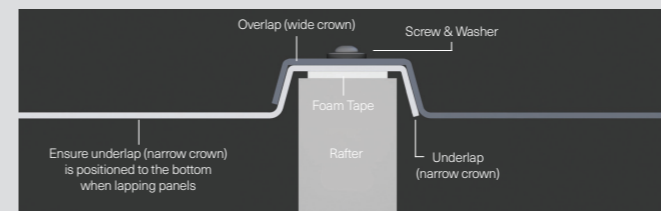
Position the pre-drilled panel onto the roof and fix on the outer edge of the canopy with Marlon R Glaze fixings.



08

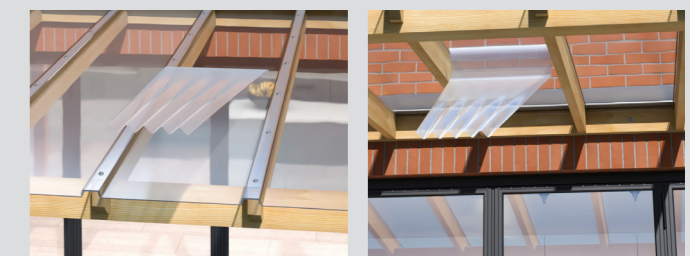
! Important – Sheet Lapping !

Fix the next panel into place ensuring that the underlap (narrow crown) is to the bottom of the lap. The underlap is clearly marked on the panel packaging.



09

Remove film from both the top and bottom of each panel immediately after installation of the panel. Protective film is 100% recyclable and should be disposed of responsibly.



10

Continue the installation sequence across the canopy until all panels have been installed. Always ensure that the clearly labelled underlap (narrow crown) is to the bottom of the lap.



Important Information

Handling & Safety

Do not step directly on Marlon R Glaze panels. Use crawler boards spanning at least three rafters. Always work according to local safety regulations and wear appropriate Personal Protective Equipment (PPE).

Storage

Store in a shaded place, protect from direct sunlight and rain prior to installation. Avoid covering the sheets with heat absorbing materials. Avoid contact with chemicals. Protect the sheets from physical damage.

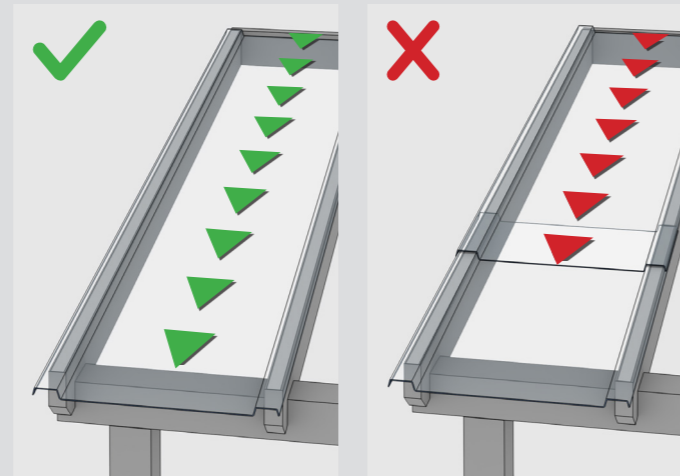
UV Protection

Marlon R Glaze has a co-extruded UV protection layer on one side, clearly marked on the product packaging. Install with the UV protected layer facing the sun.

Accessories

A full range of fully compatible installation accessories are available. All accessories must be compatible with polycarbonate.

Sheet Length



Select a panel length at least 50mm longer than the roof rafters to allow a slight overhang.

Longer sheets can be trimmed to required length however, shorter panels cannot be lapped to cover a longer roof slope.

Cutting

Marlon R Glaze can be cut to size if required. For best results use a circular saw fitted with a diamond grit blade. Vary speed rotation and feed rate.

Always support the sheet to avoid stress and vibration. Cutting multiple sheets can be achieved but extra care must be taken. Single sheet to be continuous over roof slope, do not lap.

Service Temperature

For stable prolonged service ranging from -20°C to 100°C (short term unstressed -40°C to 130°C).

Maintenance

In order to maintain this product in good condition it should be cleaned periodically using suitable detergent cleaning agents.

- Do not use solvent cleaners.
- Do not scrub with brushes or sharp implements.
- Avoid cleaning in hot sun or high temperatures.

Spanning

Load	Fixing Centres
Up to 2.0 kN/m ²	500mm
Over 2.0 kN/m ²	250mm

Drilling

Metal drill bits are suitable for drilling Marlon R Glaze. Hand or power drills can both be used. If using a power drill, set to a slow speed.

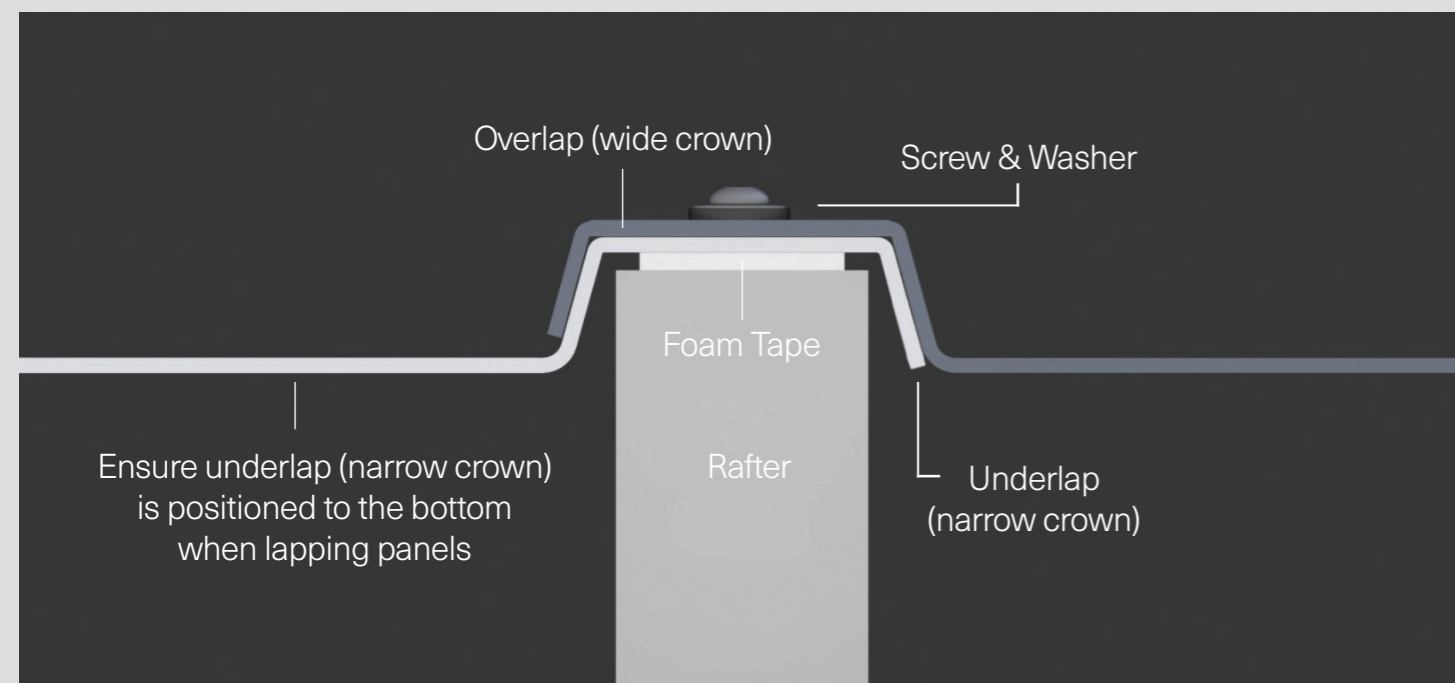
Support the sheet underneath the hole position to avoid vibration. Fixing holes should always be oversized to allow for thermal movement.

Side Lapping

Please note that Marlon R Glaze panels are handed and it must be ensured that the UNDERLAP (narrow crown) is always at the bottom of lapped panels.

When lapped correctly the top panel will fit easily over the bottom panel without any force.

The UNDERLAP is clearly marked on the panel packaging.



Canopy Structure

Start with a structure that is sound and square. Minimum roof slope of 5° is recommended for adequate water run off. Marlon R Glaze is suitable for use with both timber and metal/steel canopies. Canopy structure to be designed by others to adequately support live and dead loads. Always ensure compliance with local building regulations/code.



Max rafter width of 50mm. Rafters must be parallel to ensure correct lapping of the Marlon R Glaze panel.

Purlins must be set at 600mm centres. Ensure any paints or preservatives are dry and compatible with polycarbonate before installation commences.

