

# Marlon Clickloc

## Easy-fit Multiwall Polycarbonate Glazing Panel

### Installation Guide



Use Marlon Clickloc for carports, pool covers, canopies, veranda covers, patio covers, lean toos, wind screens and privacy screens.

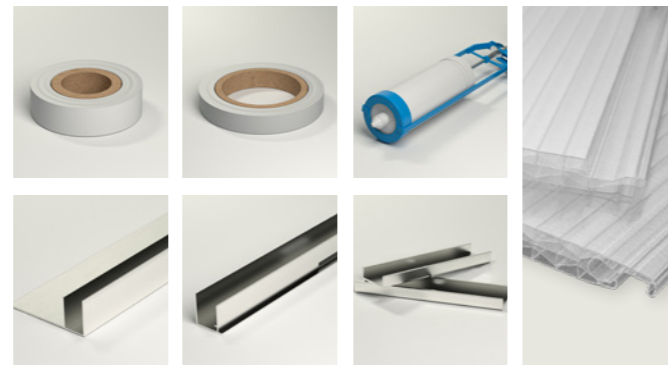
To view the installation video scan the QR Code:

[brettmartin.com/marlonclickloc](http://brettmartin.com/marlonclickloc)



To install a Marlon Clickloc easy-fit roof you will need:

- Marlon Clickloc polycarbonate panels
- Aluminium end (U) profile
- Aluminium side (F) profile
- Stainless steel self-tapping pan Head screws – No. 8 x 1/4" (by others)
- Channel washers
- Ventilation tape
- Aluminium sealer tape
- Flashing tape
- Silicone sealant



### | 01

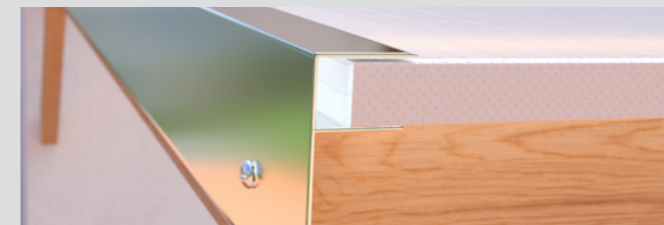
Peel the film back from around the edges of the panel and apply sealing tape to the top of the panel and ventilation tape to the bottom of the panel.

### | 02

Screw the F-shaped side profile into place

### | 03

Trim the tongue edge off the first panel to fit inside the F-shaped side profile. Slide the cut edge into the F-profile. Ensure it is fully engaged.



### | 04

Fix using screws and channel washers at each purlin. Allow for thermal movement by over-drilling holes and not over-tightening screws. A 10mm diameter fixing hole should be adequate used with a fixing of 4.2mm diameter. For hotter climates a slot should be formed.

### | 05

Engage one corner of the next panel into the groove of the fixed panel. Work along the length of the panel applying pressure to ensure it fully locks into place. Silicone lubricant can be used to ease engagement of the interlock if required. Use sparingly.

### | 06

Repeat steps 4 & 5 until you get to the end of the roof.



### | 07

Trim the edge of the final panel to fit inside the side (F) profile

### | 08

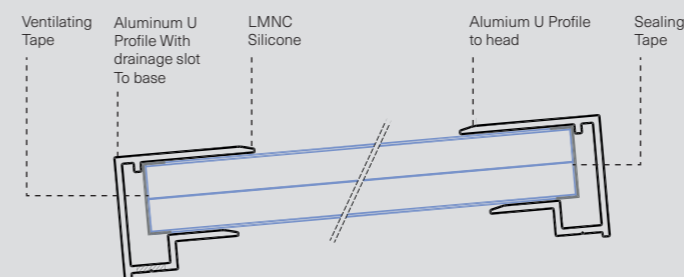
Fit the side (F) profile over the trimmed edge of the sheet and secure to the end of the purlins with screws.



### | 09

Fit the U-shaped edge profile over the taped edges of the sheet.

**\*Ensure there are drainage holes in the under-side of the profile at 500mm centres.**



### | 10

Remove film and apply silicone sealant to the top edge of the U-shaped edge profile to waterproof.

**\*Marlon Clickloc panels can also be installed in a vertical application using the same installation method.**



## Important Information

## Handling & Safety

Do not step directly on the rooflight.  
Use stepping boards. Work according to local safety regulations.

## Storage

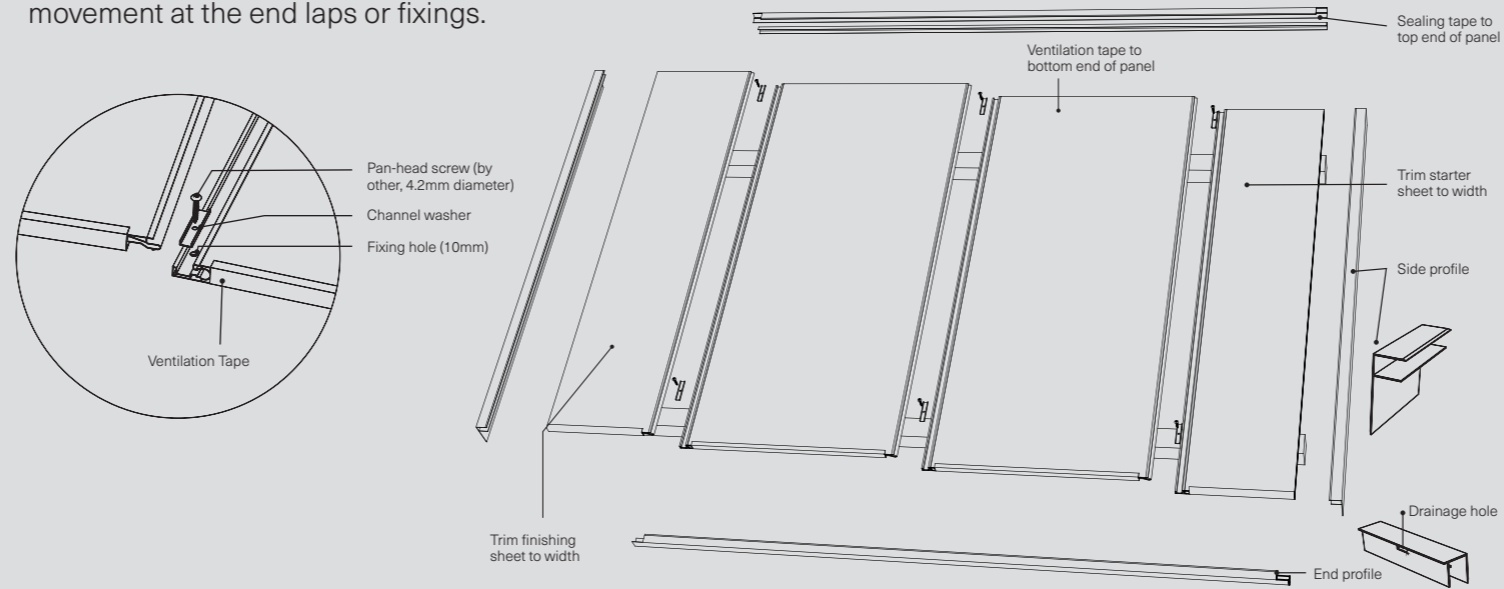
Store in a shaded place, protect from direct sunlight and rain prior to installation. Avoid covering the sheets with heat absorbing materials. Avoid contact with chemicals. Protect the sheets from physical damage.

## Installation

Make adequate allowance for thermal movement, nominally 3.5mm per metre.

Holes drilled for fixings must be oversized, a 10mm diameter fixing hole should be adequate used with a fixing of 4.2mm diameter. For hotter climates a slot should be formed.

Sheet lengths must be limited to ensure there is no excessive movement at the end laps or fixings.



- Do not overtighten fixings.
- Do not try to force the entire interlock at once. Engage one end and work along the length of the sheet.
- Silicon lubricant can be used to ease engagement of interlock. Apply sparingly.
- Remove protective film on installation.

## UV Protection

Marlon Clickloc has a co-extruded UV protection layer on one side marked by branded ribbon. Install with the UV protected layer facing the sun.

## Service Temperature

For stable prolonged service ranging from -20°C to 100°C (short term un-stressed -40°C to 130°C).

## Maintenance

In order to maintain this product in good condition it should be cleaned periodically using suitable detergent cleaning agents.

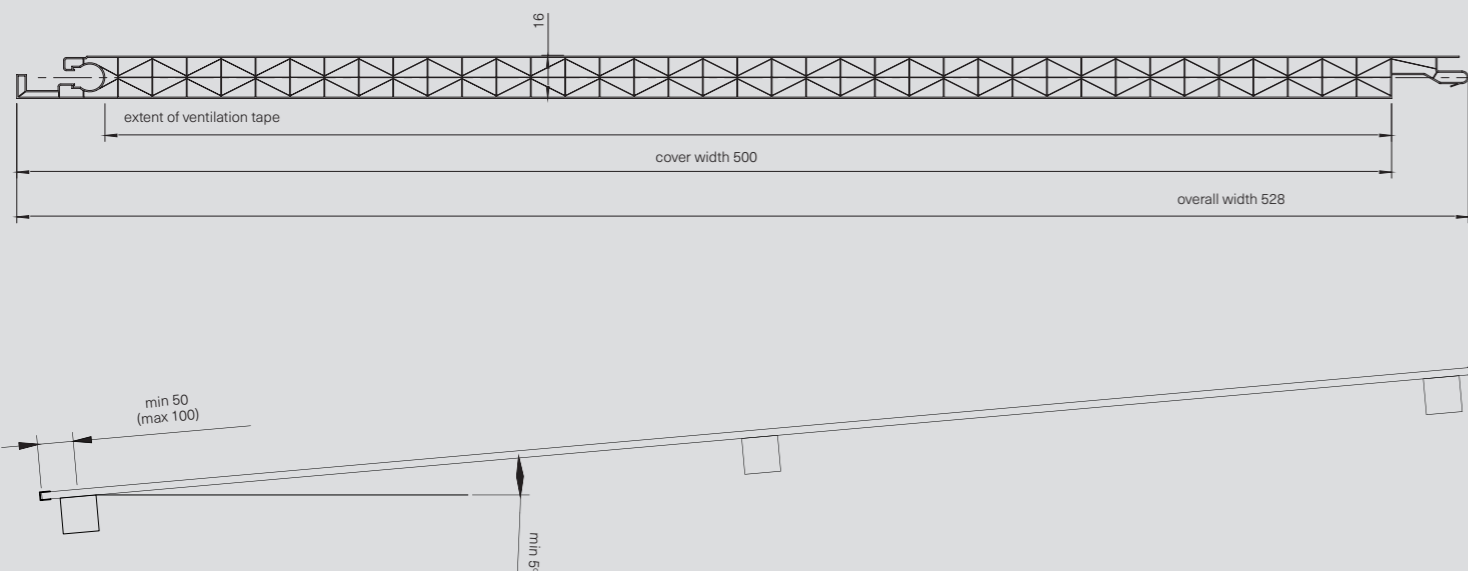
- Do not use solvent cleaners.
- Do not scrub with brushes or sharp implements.
- Avoid cleaning in hot sun or high temperatures.

## Panel Details

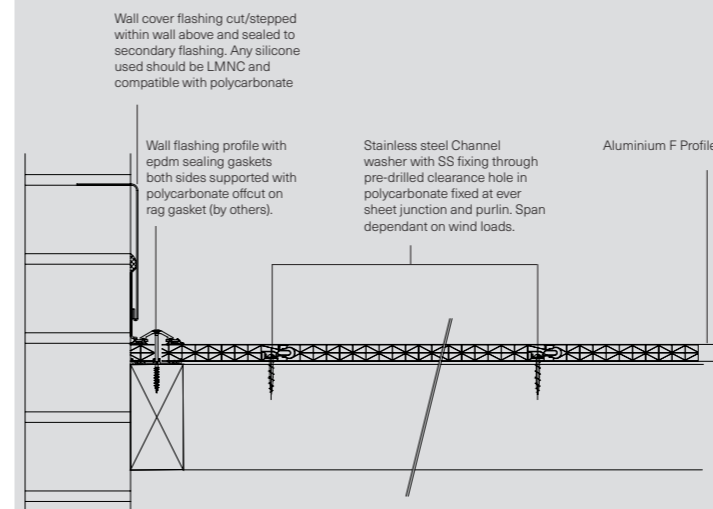
- Minimum Roof Slope 5°
- Maximum Sheet Length 4.5m
- Cover width 500mm
- Service Temperature -20°C to 100°C. (Short term unstressed -40°C to 130°C)

### Spanning Table

Purlin Centres (mm)	Load (N/m <sup>2</sup> )
800	1000
1000	750
1200	500



## Wall side abutment & verge detail



## Wall top abutment & eaves detail

