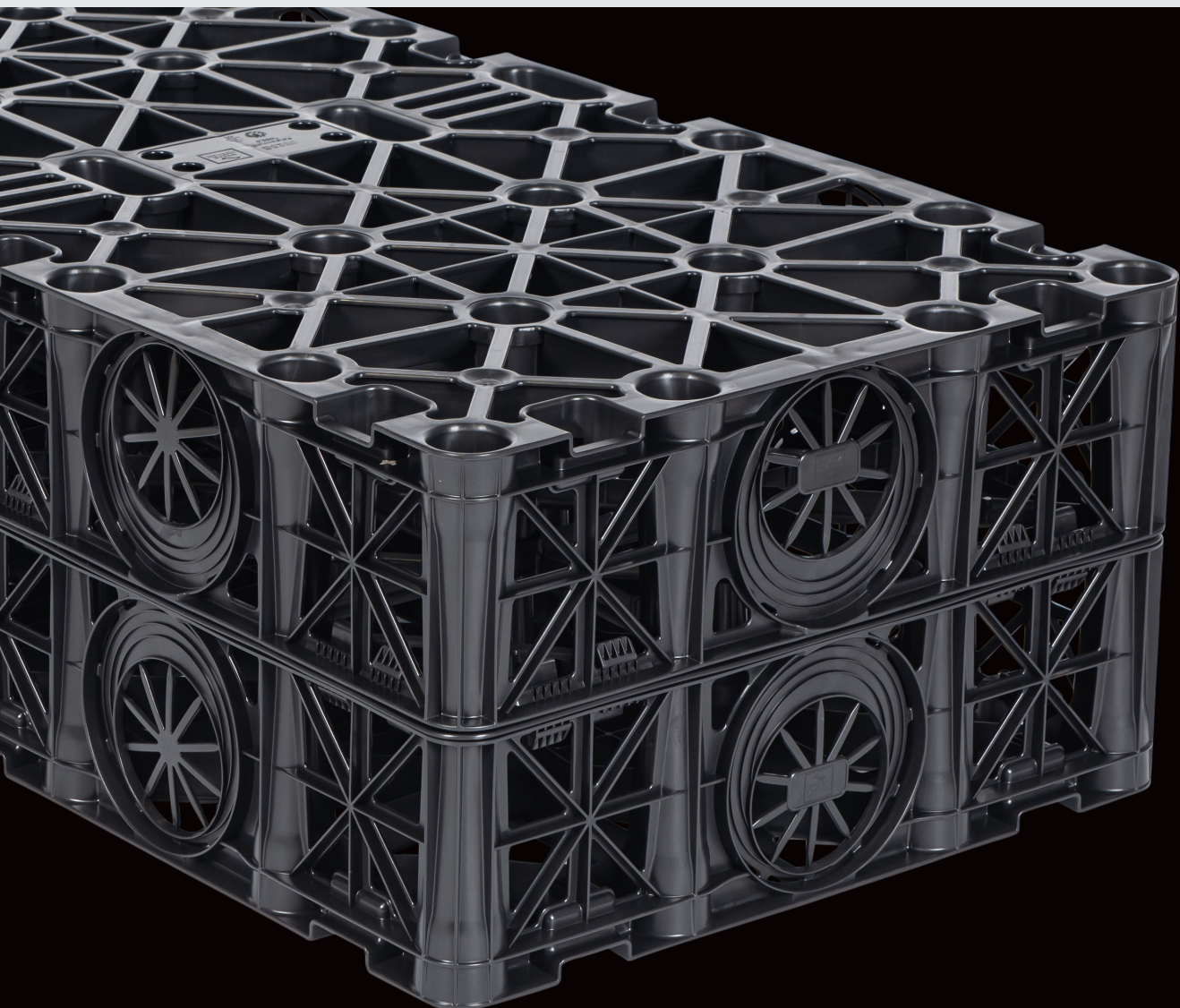




StormCrate 55

Soakaway and Attenuation Crate



Stormwater Management

Brett Martin's StormCrate55 modular cellular crates are used in stormwater attenuation and infiltration applications.

The crates are designed to be simply and easily stacked together to create a below ground stormwater holding tank or to allow the infiltration of stormwater into the ground around them.

The void created by the crates can then fill up with water during heavy rainfall conditions. The collected water then drains away slowly into the drainage system when the crate is used for attenuation, or, soaks away slowly into groundwater table when the crate is used for infiltration.

Extensive use of this type of stormwater attenuation/infiltration module has helped relieve pressure on conventional surface water drainage systems in line with the Sustainable Urban Drainage Systems (SuDS) program advocated by the Environment Agency.

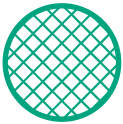


Benefits



StormCrate55

Provides a highly effective means of managing stormwater, contributing to reducing the risk of flooding.



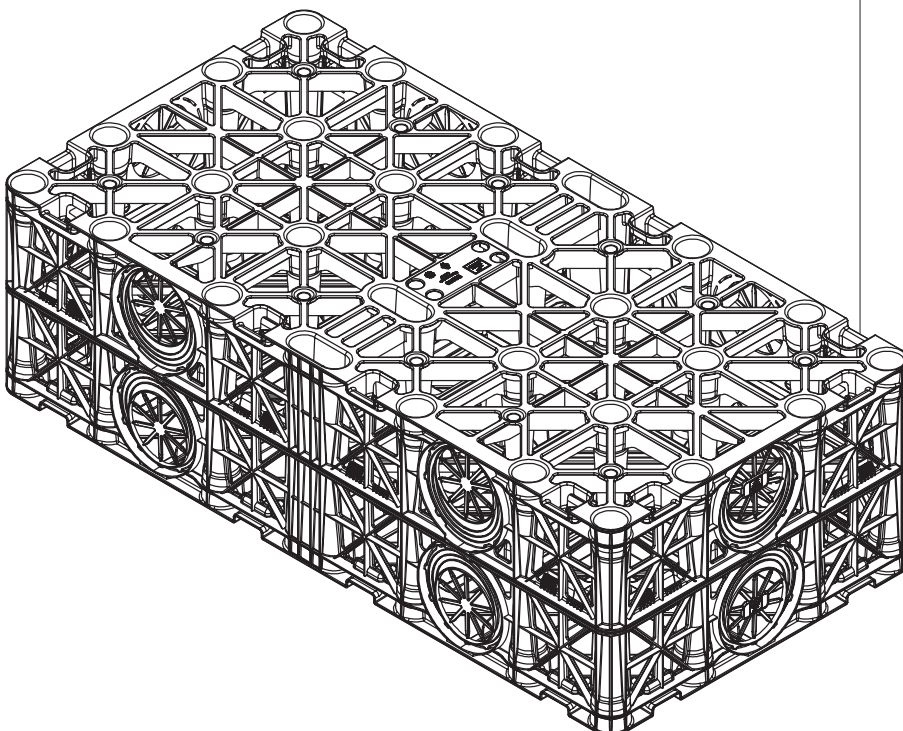
Rainwater Infiltration:

StormCrate55 can be wrapped in a geotextile which allows stored water to slowly seep into the surrounding ground and back into the water table.



Rainwater Attenuation:

Another common practice is to surround StormCrate55 with an impermeable geomembrane to create a sealed underground tank. The outlet from this tank is then controlled to facilitate a slow release of the stored water back into the drainage system over a longer period.



Stormwater Capacity

- The volume of each crate is 0.25m³ with a 95% void ratio. Due to the modular nature of StormCrate55 the system can be scaled appropriately depending on the size of installation, for example, 16 StormCrate55 are required for a 4m³ installation.
- The cellular structure of StormCrate55 maximises water holding capabilities with its 95% void ratio meaning that each crate can store up to 237.5L or 0.2375m³ of stormwater.

Quick & Easy to Install

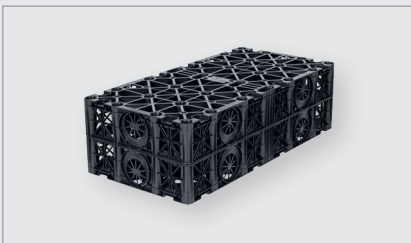
- Comprising of modular units, StormCrate55 is quick and easy to install.
- Weighing in at only 15.5kg per module, the crates can be easily lifted and set in place by hand without the need for heavy lifting equipment on site.
- The shallow installation depths required for the crates means less ground working and site spoil.
- The individual modules are joined using connectors and shear pins in a brick bond pattern, a very simple but effective jointing method, which allows crates to fit together quickly and with ease providing stability in both vertical and horizontal planes.

Properties & Values

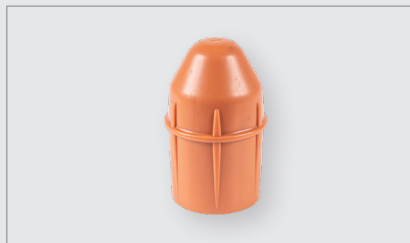
Physical Properties	Value	
Volume	0.25m ³	
Cube Storage Volume	0.2375m ³	
Void Ratio	95%	
Dimensions	1200mm x 600mm x 347mm	
Connections	12 x pipe inlets	
Weight	15.5kg	
Material	Polypropylene	
Strength	Vertical	Lateral
Short Term Strength	562kN/m ²	70kN/m ²
Long Term Strength	153kN/m ²	19kN/m ²

Components

StormCrate55
Code B8250



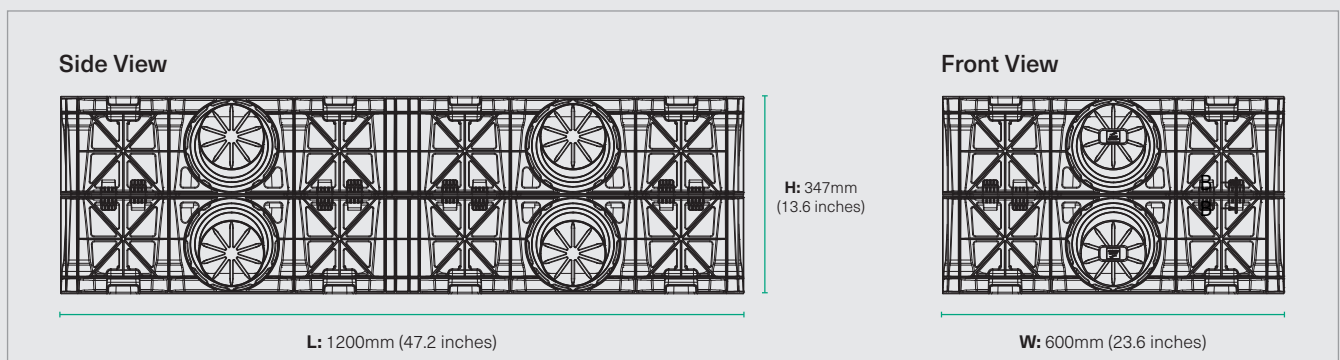
Shear Pin Connector
Code B8252 (2 included)



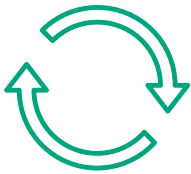
Stormcrate55 Connector
Code B8251 (4 included)



Product Dimensions

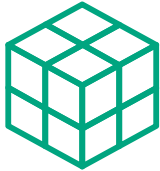


Features



Circular Economy

The use of 100% recycled polymer in StormCrate55 lowers its carbon footprint, making it a sustainable choice.



Modular Design

The crates are designed to be easily laid in a brick bond pattern.



Quick & Easy to Install

At only 15.5kg per module, StormCrate55 is easily lifted by hand.



High Performance Loading

Load bearing design of up to 562kN per m².



Easy Connection

The crates fit quickly and simply together with four connectors and two shear pins per crate.



Stormwater Management

StormCrate55 steadily disperses high intensity stormwater by infiltration or attenuation. Each crate has a capacity of 237.5L or 0.2375m³.

England & Wales

Speedwell Ind. Estate
Staveley, Derbyshire
S43 3JP

t: 01246 280000

e: building@brettmartin.com

Orderline

e: bpsales@brettmartin.com

Scotland

Blairlinn Road
Cumbernauld, Glasgow
G67 2TF

t: 01236 725536

e: scotland@brettmartin.com

Ireland

24 Roughfort Road
Mallusk, Co. Antrim
BT36 4RB

t: 028 9084 9999 (NI)

048 9084 9999 (ROI)

Orderline

t: 048 9084 8999 (ROI)

028 9084 8999 (NI)

e: sales@brettmartin.com

For the latest information visit

brettmartin.com

3078/1124

