



DRAINAGE SYSTEMS & ROOFING RANGE



Plumbing & Drainage



DRAINAGE SYSTEMS & ROOFING RANGE

Brett Martin's Drainage systems and Roofing range has earned a reputation for quality and performance.

As the largest independent plastic building products manufacturer in GB and Ireland, Brett Martin supplies an extensive range of quality plastic drainage solutions in Underground, Plumbing and Rainwater systems including the innovative Cascade Cast Iron Style Rainwater and Soil System and a tailored Roofing range comprising sheet options for roofing, cladding and glazing applications and a range of dome rooflights.

All products are manufactured to BS EN ISO 9001:2015 and backed by the relevant product certifications and approvals, demonstrating a product portfolio of the highest quality. Combine this with dedicated sales and service professionals and a 3-5 day delivery throughout Ireland, and our customers are guaranteed the best quality product and service.



Plumbing & Drainage

www.brettmartin.com

Contents



UNDERGROUND DRAINAGE SYSTEMS pg 2-3

- Drain Pipe & Fittings
- Sewer Pipe & Fittings
- Surface Water Pipe & Fittings
- Duct Pipe
- Twinwall Pipe & Fittings
- Adoptable Access Chamber Assemblies
- Chamber Assemblies
- Gullies
- Stormwater Attenuation Crates
- Linear Channel Drains
- Waste Water Management Systems



PLUMBING SYSTEMS pg 4-5

- Push-fit Soil
- Solvent Weld Soil
- Push-fit Waste
- Solvent Weld Waste
- Universal Overflow
- Traps
- Compression Waste



RAINWATER SYSTEMS pg 6-7

Domestic

- Prostyle 106mm
- Roundstyle 112mm
- Squarestyle 114mm
- Deepstyle 115mm

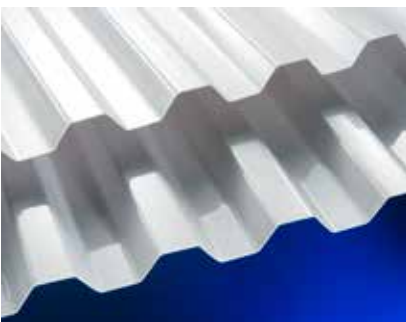
Industrial

- Deepstyle 170 170mm



CASCADE CAST IRON STYLE RAINWATER AND SOIL SYSTEMS pg 8-9

- Prostyle 106mm
- Roundstyle 112mm
- Deepstyle 115mm
- High Capacity 170mm
- Hoppers
- Push-fit Soil System



ROOFING RANGE pg 10-11

- Marvec Corrugated PVC Sheet
- Trilite GRP Roofing Sheet
- Coroline Corrugated Bitumen Sheet
- Marvec CS Agri
- Liteglaze Acrylic Sheet
- Styrene Polystyrene Sheet
- Mardome Dome Rooflights





UNDERGROUND DRAINAGE SYSTEMS

Brett Martin Plumbing and Drainage offers a complete range of underground drainage systems including Drain, Sewer, Surface Water and cable Duct Systems. The entire range incorporates pipes and fittings in eight diameters from 53.9mm to 600mm. Manufactured to exacting standards all Brett Martin underground drainage systems are designed to provide the installer with maximum choice, flexibility, ease of installation and long-term reliability.

Standards

- Brett Martin Underground Drainage Systems are manufactured and licensed to the following Standards:
- EN 1401-1:2009 Plastic piping systems for non-pressure underground drainage and sewerage (SN4). Unplasticised poly (vinyl chloride) (uPVC). Part 1: Specifications for pipes, fittings and the system.
- EN 13598-1:2003 Plastic piping systems for non-pressure underground drainage and sewerage. Unplasticised poly (vinyl chloride) (uPVC), polypropylene (PP) and polyethylene (PE). Part 1: Specifications for ancillary fittings including shallow inspection chambers.

All components are manufactured under a quality management system registered under BS EN ISO 9001:2015.



Plumbing & Drainage

DRAIN 110mm & 160mm

A range of 110mm and 160mm Drain Pipe and Fittings with BS EN 1401-1 certification. The Pipes are available in plain ended and single socket form. 110mm and 160mm Single Socket Pipe features a lip seal and 110mm Fittings features a captive seal – all designed for easy jointing and maximum sealability.



SEWER 200mm – 400mm

Brett Martin's range of Sewer Pipe and Fittings are available in a range of dimensions from 200mm to 400mm come with BS EN 1401-1 certification. The Pipes are available in plain ended and single socket form and the Single Socket Pipe features a lip seal to allow for easy jointing whilst securing against dislodgement.



SURFACE WATER PIPE & FITTINGS

110mm – 600mm

A choice of solid Pipe & Fittings in 110mm and 160mm diameters, Perforated Pipe in diameters 53.9mm to 400mm and Twinwall Pipe in diameters 150mm to 600mm are available. The Twinwall Pipe comes in non-perforated, half perforated and perforated.



DUCT PIPE 53.9mm – 200mm

Brett Martin offers general purpose solid wall ducting and couplers in diameters from 53.9mm to 200mm.



TWINWALL MULTI-FITTINGS

150mm – 300mm

Compatible with others' polyethylene Twinwall pipes in non HAPAS installations, Brett Martin's Twinwall Pipe and Fittings are available in 150mm – 300mm diameters. All fittings are BBA certified.



ACCESS CHAMBER ASSEMBLIES

- 280mm, 315mm & 450mm diameters
- 450mm diameter Lids & Frames with 50kN loading capability



ADOPTABLE ACCESS CHAMBER ASSEMBLIES

A range of superior strength Chambers with excellent load bearing capabilities designed to satisfy the requirements of Sewers for Adoption 7 (SfA7).

- 315mm and 450mm diameters
- EN 13598-1 certified
- Compliant with SfA7 and Building Regulations Part H1



GULLIES

Brett Martin offers the largest range available from any drainage manufacturer:

- Roddable Bottle Gullies featuring round, square and rectangular hoppers
- Tubular gullies
- Yard gully
- Grids and Sealing Plates



STORMWATER ATTENUATION CRATES

Designed to be stacked together to create below ground storm water attenuation, surface water infiltration and soakaway systems.

- Geocellular rainwater attenuation modules
- Lightweight and easy to install in up to 10 layers
- 3.3 StormCrates per 1m³ storage capacity
- Lorry bearing of up to 60 tonnes
- Fully inspectable for future maintenance when used with StormCrate Inspect Crates



LINEAR CHANNEL DRAINS

These are designed to effectively remove water from pedestrian areas such as driveways, patios, garage entrances and at thresholds

- 110mm drainage layouts
- Range of fittings available



WASTEWATER MANAGEMENT

Brett Martin offers a range of Waste Water Management Systems to satisfy the needs of small developments, single dwellings and small commercial businesses. The range includes:

- Percolation System
- Rainwater Harvesting
- Wastewater Treatment Plants
- Grease Traps





PLUMBING SYSTEMS

Brett Martin's complete range of plastic plumbing systems cater for soil, waste and overflow in domestic, commercial and public building applications. The Soil and Waste systems incorporate both Solvent Weld and Push-fit assemblies, each offering fast installation and maximum durability. Each system comprises a complete component range available in a choice of sizes and colours. Traps, Universal Overflows and Compression Waste complete the Soil and Waste range.

Standards

Brett Martin Soil and Waste Systems are manufactured, to the following Standards:

- EN 274:2002 Waste fittings for sanitary appliances
- EN 1329:2000 Specification for unplasticised PVC soil and ventilating pipes, fittings and accessories
- EN 1451:2000 Plastics piping systems for soil and waste discharge within the building structure - polypropylene
- 1566:2000 Plastics piping systems for soil and waste discharge within the building structure - Chlorinated poly (vinyl chloride) PVC-C

All components are manufactured under a quality management system registered under BS EN ISO 9001:2015.



Plumbing & Drainage

PUSH-FIT SOIL 82.4mm, 110mm, 160mm

uPVC Soil System

Brett Martin Push-fit Soil systems are highly adaptable 82.4mm, 110mm and 160mm diameter systems. Long-lasting rubber seals, retained by strong snap caps give the convenience of the push-fit installation plus prolonged reliability. The systems are manufactured and kitemarked to BS EN 1329 and are fully compatible with others' systems. The Push-Fit Soil system integrates with Brett Martin Push-fit Waste and Underground Drainage systems. Colour options include Black, Grey, Brown, White and Cast Iron Style.



SOLVENT WELD SOIL 82.4mm, 110mm

uPVC Soil System

Designed for solvent weld jointing, this soil assembly is available in 82.4mm and 110mm diameter systems in Black, White and Olive Grey. A full range of components include branches, twist and lock access fittings, boss fittings, bends and adaptors. Manufactured and kitemarked to BS EN 1329, the Solvent Weld Soil system is fully compatible with other systems and integrates with Brett Martin Solvent Weld Waste and Underground drainage systems.



PUSH-FIT WASTE 32mm, 40mm and 50mm

PP Waste System

Brett Martin Push-fit Waste systems, manufactured in polypropylene, are available in 32mm, 40mm and 50mm diameters in White, Grey, Brown and Black. Captive ring seal joints ensure ease of assembly and a completely watertight connection that can accommodate thermal movement. The Push-fit Waste system integrates with Brett Martin Push-fit Soil systems.



SOLVENT WELD WASTE 32mm, 40mm, 50mm

PVC-C Waste System

Brett Martin Solvent Weld Waste systems, manufactured in modified uPVC are extremely durable and designed to provide secure solvent weld jointing. PVC-C provides superior fire performance and its high softening point means it is not adversely affected by very hot water discharges over long periods. Solvent Weld Waste systems are available in 32mm, 40mm and 50mm diameters in Black, White, Brown and Olive Grey.



UNIVERSAL OVERFLOW 21.5mm

PVC-C Overflow System

A complete 21.5mm Overflow System, manufactured in White and Grey PVC-C, can be push-fit assembled or solvent weld jointed. Suitable for both hot and cold water applications.



TRAPS 32mm, 40mm

PP Traps

Brett Martin offer a complete range of universal compression joint traps in 32mm and 40mm diameters. These include Tubular "P" and "S" traps, bottle traps, bath and washing machine traps.



COMPRESSION WASTE 32mm, 40mm

PP Waste System

Brett Martin Compression Waste systems are produced in white polypropylene, in 32mm and 40mm diameters. Compression Waste Systems are capable of taking high temperature discharges, and thermal movement allowances are accommodated in the design.





RAINWATER SYSTEMS

Brett Martin's Rainwater range features a choice of quality uPVC systems including Roundstyle, Squarestyle, Deepstyle, Prostyle and High Capacity in a variety of colours with round or square downpipe options to suit any building application. Known for its quality, the Brett Martin Rainwater range has been designed to facilitate fast, efficient, economical installation and exceptional reliability which provide the merchant, installer and the end user with satisfaction, peace of mind and a full comprehensive guarantee.

Features

- Five rainwater systems with round or square downpipe options
- Choice of colours: Black, White, Brown, Arctic White, Grey, Anthracite Grey
- Strong and durable yet lightweight plastic which is safe to handle and easy to install
- UV stabilised to prevent discoloration
- Fully tested for accelerated ageing (EN 607:1995)
- Produced to a high quality to BS EN ISO 9001:2015.
- 10 year warranty



Plumbing & Drainage

PROSTYLE 106mm PROFILED DOMESTIC SYSTEM

Prostyle is a classic 'ogee' profiled system suitable for more contemporary styled properties due to its sleek lines and modern appearance. The Prostyle system utilises 65mm Square downpipe and fittings. It is available in five colours: Black, White, Brown, Arctic White and Anthracite Grey.



ROUNDSTYLE 112mm CLASSIC DOMESTIC SYSTEM

Roundstyle is a traditional 112mm half round system suitable for the domestic housing market. The Roundstyle system utilises 68mm round downpipe and fittings. It is available in six colours: Black, White, Grey, Brown, Arctic White and Anthracite Grey.



SQUARESTYLE 114mm MODERN DOMESTIC SYSTEM

Squarestyle is an angular 114mm rectilinear system providing 20% higher flow capacity than a half round system. It is suitable for larger domestic roofs. The Squarestyle system utilises 68mm round downpipe and fittings. It is available in four colours: Black, White, Brown and Arctic White.



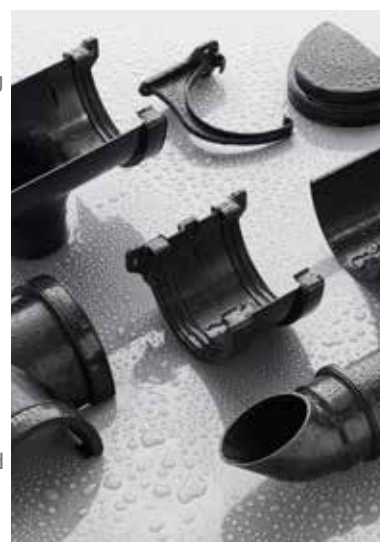
DEEPSTYLE 115mm HIGH CAPACITY DOMESTIC SYSTEM

Deepstyle is a semi elliptical system which offers more effective rainwater drainage on larger roof areas. The Deepstyle system utilises 68mm round downpipe and fittings. It is available in five colours: Black, White, Brown, Arctic White and Anthracite Grey.



DEEPSTYLE 170 170mm INDUSTRIAL SYSTEM

Deepstyle 170 is a high performance industrial rainwater system offering increased drainage capacity for larger commercial projects, factories, warehouses, farm building and apartments. Featuring innovative CLIP & SEAL technology for ease of installation, superior sealing and exceptional reliability. The system utilises 110mm round downpipe and fittings and is available in Black and Grey colour options.





CASCADE CAST IRON STYLE RAINWATER AND SOIL SYSTEMS

Cascade is a range of gutter and downpipe profiles which provides authentic traditional cast iron style in plastic. The specially coated PVC gutter systems combine with cast iron detailing on pipe work, fittings and hoppers to give the full appearance of cast iron with all the benefits of modern plastic materials. The full range comes ready to fit with no need for primers, undercoat or topcoat to prevent corrosion.

Available in 106mm profiled, 112mm round, 115mm deep and 160mm industrial with round, square and rectangular downpipe options. In addition to Classic Black, Cascade is available in a choice of heritage colours including Oxford Blue, Olive Green, Graphite Grey, Sandstone, Porcelain White and Anthracite Grey.

Features

- An affordable alternative to traditional materials
- Extensive choice of gutter and pipework profiles
- Complementary push-fit soil system
- Range of traditional hopper designs
- Quick and easy to install
- Lightweight, robust materials
- Fully UV stabilised
- Durable and corrosion resistant
- 10 year warranty



Plumbing & Drainage

Cascade

CAST IRON STYLE RAINWATER AND SOIL SYSTEM

PROSTYLE 106mm CAST IRON STYLE DOMESTIC RAINWATER SYSTEM

The sleek lines and modern styling of the Prostyle Cast Iron Style Rainwater System provide a more contemporary finish with a quality cast iron look and feel. Offering a modern twist on heritage styling, the Prostyle system is ideally suited to traditionally styled new build projects.



ROUNDSTYLE 112mm CAST IRON STYLE DOMESTIC RAINWATER SYSTEM

The Roundstyle Cast Iron Style Rainwater System is synonymous with traditional cast iron styling and blends perfectly with the architectural detailing on heritage buildings, being virtually indistinguishable from original cast iron systems. The authentic styling of the Roundstyle system is suitable for both period styled new build and renovation projects alike.



DEEPSTYLE 115mm CAST IRON STYLE DOMESTIC RAINWATER SYSTEM

Combining period cast iron detailing and styling, Deepstyle is a higher capacity semi elliptical rainwater system, providing greater drainage efficiency on larger roof areas.



DEEPSTYLE 170mm CAST IRON STYLE HIGH CAPACITY RAINWATER SYSTEM

The High Capacity Cast Iron Style Rainwater System is ideally suited to traditionally styled buildings with larger roof areas. Period style detailing combined with very high levels of roof drainage ensure that this system can be used on a wide variety of large heritage style buildings. Incorporates 105mm Round Downpipe and 100 x 75mm Rectangular Downpipe.



CAST IRON STYLE HOPPERS

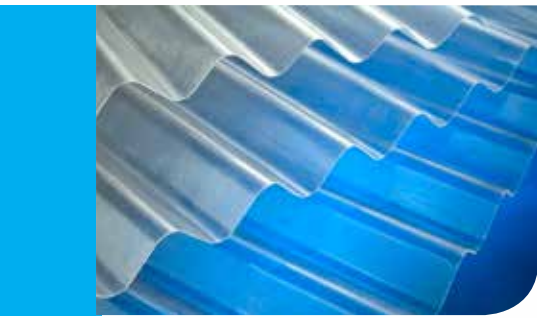
Brett Martin's extensive range of authentic hopper styles and designs provides the opportunity for the designer and home owner to individualise their rainwater system. The hopper designs include traditional Ogee, Bath and Gothic hoppers and a choice of period motifs including Tudor Rose, Fleur de Lys, Lion and Gargoyles.



CAST IRON STYLE SOIL SYSTEM 110mm

To complement Cast Iron Style Domestic and High Capacity Rainwater Systems, the Cascade range includes a comprehensive 110mm Cast Iron Style Soil System with a realistic cast iron finish.





ROOFING

To complement the Drainage systems, Brett Martin provides an extensive Roofing range including sheet options in PVC, GRP, Bitumen, Acrylic and Styrene and Dome Rooflights suitable for a wide range of roofing, cladding and glazing applications.

All Roofing products are manufactured in ISO accredited factories and fully tested for use in commercial, industrial, residential and DIY projects.

Features

- An extensive range of sheet products for roofing, cladding and glazing applications
- Accessories to match PVC, GRP and Bitumen sheet options
- A range of BBA approved Mardome dome rooflights:
 - Designed for daylighting new or refurbishment residential and smaller commercial projects
 - Glazing and kerb options
 - Higher specification options



Plumbing & Drainage

MARVEC CORRUGATED PVC SHEET

Marvec CS is an economical, lightweight and versatile clear PVC rooflight and glazing sheet. Available in a choice of corrugated profiles, sheet weights and lengths, Marvec is easy to cut, drill and install with standard DIY tools and is suitable for a range of projects including car ports, covered walkways, green-houses, splash barriers and wall cladding.

Profiles:

- 8/3 Iron – 1.3mm
- 10/3 Iron – 1.3mm
- Mini – 0.7mm



TRILITE GRP ROOFING SHEET 1.8kg/m²

Trilite GRP is a popular rooflighting option used for industrial and agricultural buildings and offers a diffused natural daylight which minimises shadows.

Profiles:

- Iron 8/3
- Iron 10/3
- Big Six



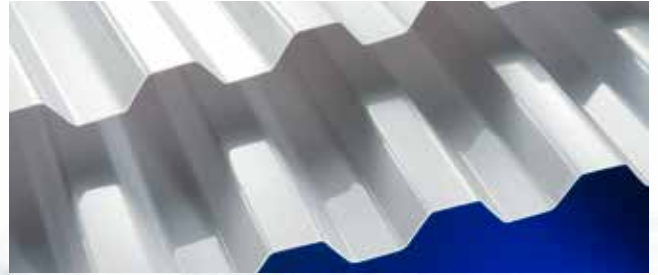
COROLINE CORRUGATED BITUMEN SHEET

Made from bitumen saturated organic fibres, Coroline corrugated bitumen sheets are an environmentally friendly roofing and cladding option. These tough but lightweight sheets come in Black, Green, Red and Brown and are compatible with most commercially available construction materials. This economical roofing material is suitable for a range of projects including garden sheds, garages, stables and agricultural buildings.



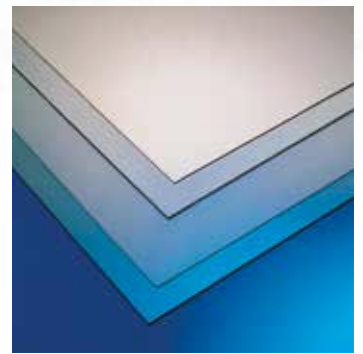
MARVEC CS AGRI

Marvec CS Agri is a white corrugated PVC cladding sheet developed with chemical resistance to withstand challenging agricultural environments. This durable interior cladding sheet is used to cover walls and ceilings of agricultural buildings.



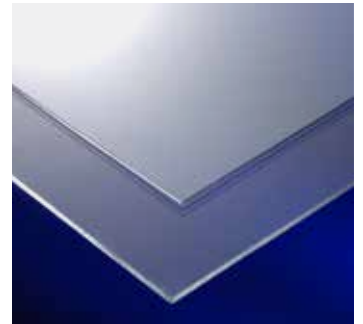
LITEGLAZE ACRYLIC SHEET 2mm, 4mm

Liteglaze acrylic flat sheet comes with UV protection on both sides and is suitable for a range of DIY glazing projects, both indoors and outdoors. Light in weight, yet stronger and safer than glass, it offers excellent optical clarity, flexibility and can be easily cut or drilled, making it an ideal DIY glazing sheet.



STYRENE POLYSTYRENE SHEET 2mm, 4mm

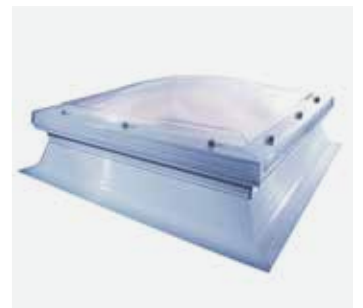
Styrene clear polystyrene is used only for interior glazing projects and is an economical glazing choice. Five times stronger than glass this lightweight yet strong glazing sheet is much safer to use, easily transported and simple to cut and drill with everyday DIY tools.



MARDOME DOME ROOFLIGHTS

Mardome is a range of BBA approved dome rooflights specifically designed for flat roofing applications typically found in residential and commercial applications. A selection of the most popular Mardome Trade rooflights, glazed in double-skin clear polycarbonate and with an opening option are available with the Mardome PVC kerb or as a direct fix option to a builders upstand.

An extended range of Mardome rooflights is available to special order and satisfying projects where thermal performance, ventilation, light transmission or bespoke sizing is required. Flat glass and powder coated aluminium frame options are also available where a more architectural finish is specified.





BRETT
MARTIN

BRETT MARTIN

BRETT MARTIN

IFZ 6169

BRETT MARTIN

BRETT MARTIN

IFZ 6170

BRETT

BRETT M

NI



MARTIN
BRETT MARTIN
PVC

BRETT MARTIN
BRETT MARTIN
IFZ 6171

BRETT MARTIN
BRETT MARTIN
IFZ 6172



Plumbing & Drainage

24 Roughfort Road
Mallusk, Co. Antrim
Northern Ireland, BT36 4RB
Tel: +44 (0) 28 9084 9999
Fax: +44 (0) 28 9083 6666
Sales Counter: +44 (0) 28 9084 8999
Email: sales@brettmartin.com

For the latest company information visit the company's website:
www.brettmartin.com

